

# Worker Unwell at Site

## Scenario Action Flowsheet - Worker Develops Fever-Like Symptoms while working at Site

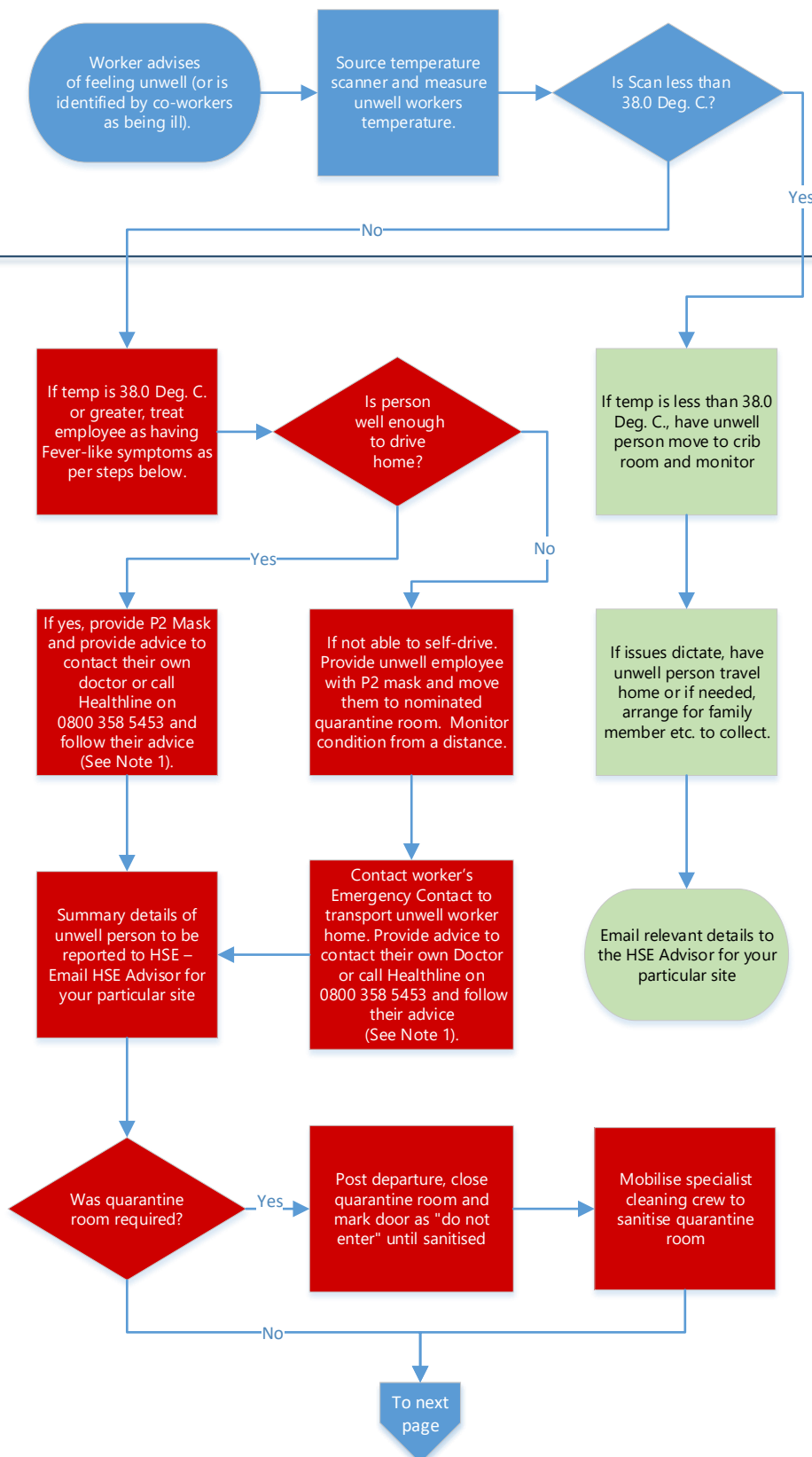
### Workflow (Page 1 of 2)

### Notes

#### Assumptions:

This flowchart only applies to the case where a Worker becomes unwell or develops fever-like-symptoms during the course of their work shift. It does not apply to cases where a person arrives at work in an un-well state and if that were to occur, then the unwell employee should be sent home immediately and reminded of the company requirement that unwell personnel must not present for work.

- Thermal scanning test to be conducted in accordance with the COVID-19 Management Procedure)
- The criteria for admission to our sites is a temperature recording **less than** 38.0 Deg. C.



**Note 1:** Support is also available at:

<https://www.health.govt.nz>

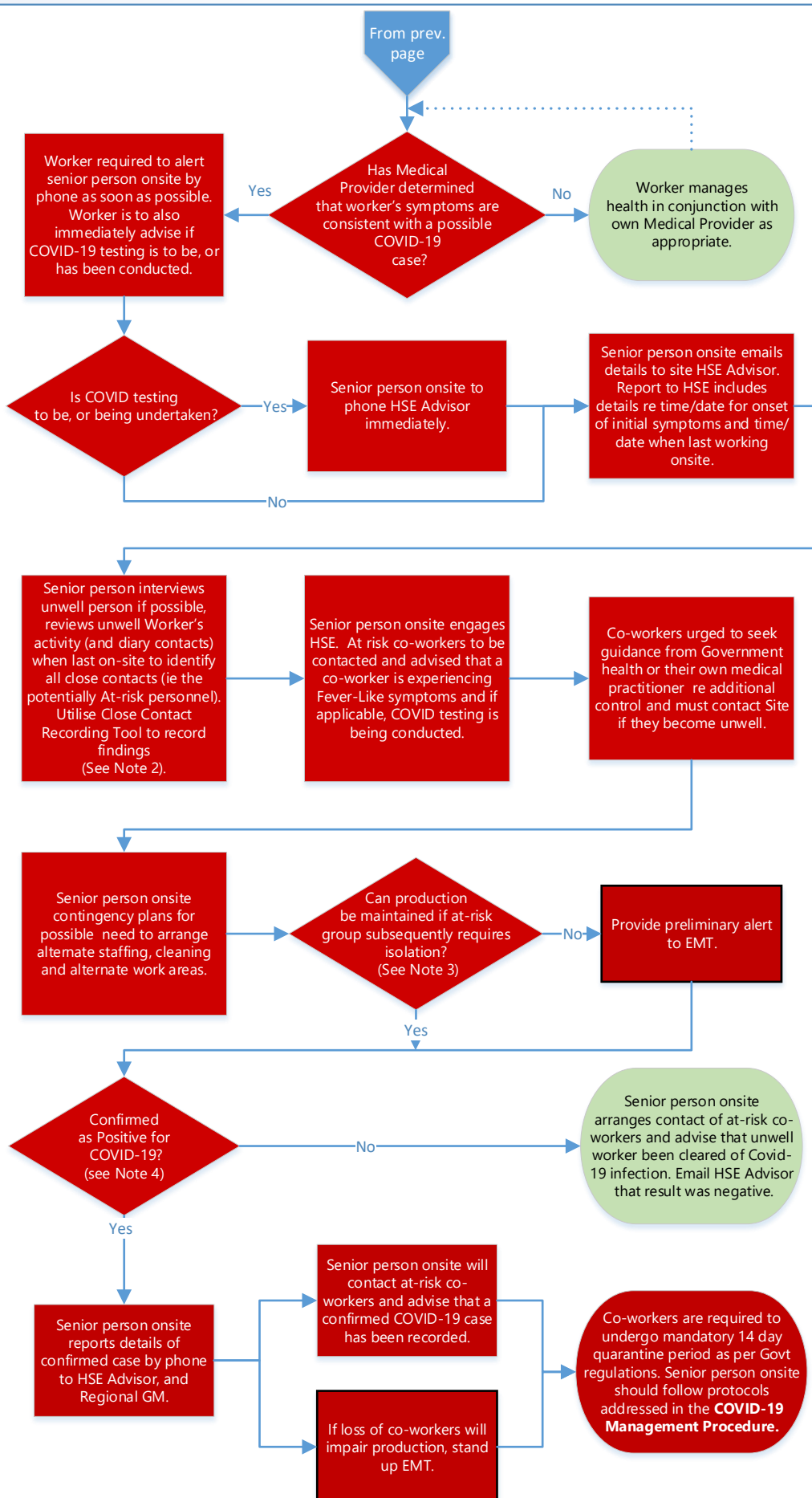
- If an unwell person does not display Fever-like symptoms (e.g. they have stomach upset, nausea etc) then they should not be moved to site quarantine room - quarantine room should be kept clean for use in the event of fever cases only.
- Distance monitoring involves contact by phone or from standing at quarantine room door (i.e. > 1.5 distance) with intent of minimising contamination exposure.
- In unlikely event of very rapid deterioration in condition of unwell person, render assistance as needed (first aider to use gloves/ mask / eye protection) and also if needed, consider ambulance.
- Contact lists have been developed for specialist sanitisation cleaners – refer to Company COVID-19 Control Plan

# Worker Unwell at Site

## Scenario Action Flowsheet - Worker Develops Fever-Like Symptoms while working at Site

### Workflow (Page 2 of 2)

### Notes



**Note 2:** Close Contact Recording Tool includes applicable Close Contact definition

- When communicating with at-risk co-workers, **do not identify the name of the un-well co-worker at any time** as this may create possible privacy issues (i.e. sharing of personal medical information).

**Note 3:** Consider the risk to maintaining production if at-risk work team subsequently requires isolation in event of positive COVID-19 Result.

**Note 4:** The worker's Doctor will inform the patient of the result. The Ministry of Health will also contact the unwell worker for contact tracing purposes. Close Contact Recording Tool will assist the Government officers).