

Worker Unwell Post Shift

Scenario Action Flowsheet - Worker Develops Possible COVID-19 Symptoms Post Completion of Shift Swing

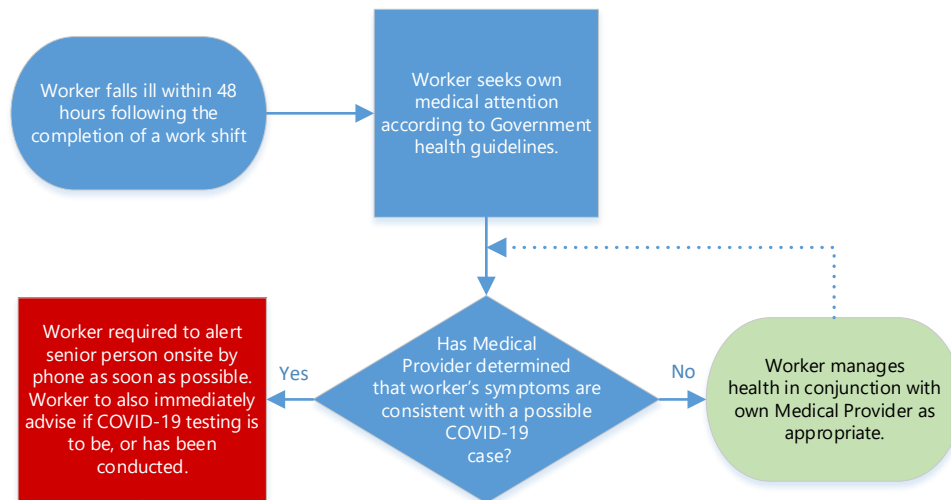
Workflow

Notes

Assumptions:

While the standard guidance is that people with Covid-19 may be infectious for around 24 hours before the onset of initial symptoms, this workflow conservatively doubles that potential infection window to 48 hours

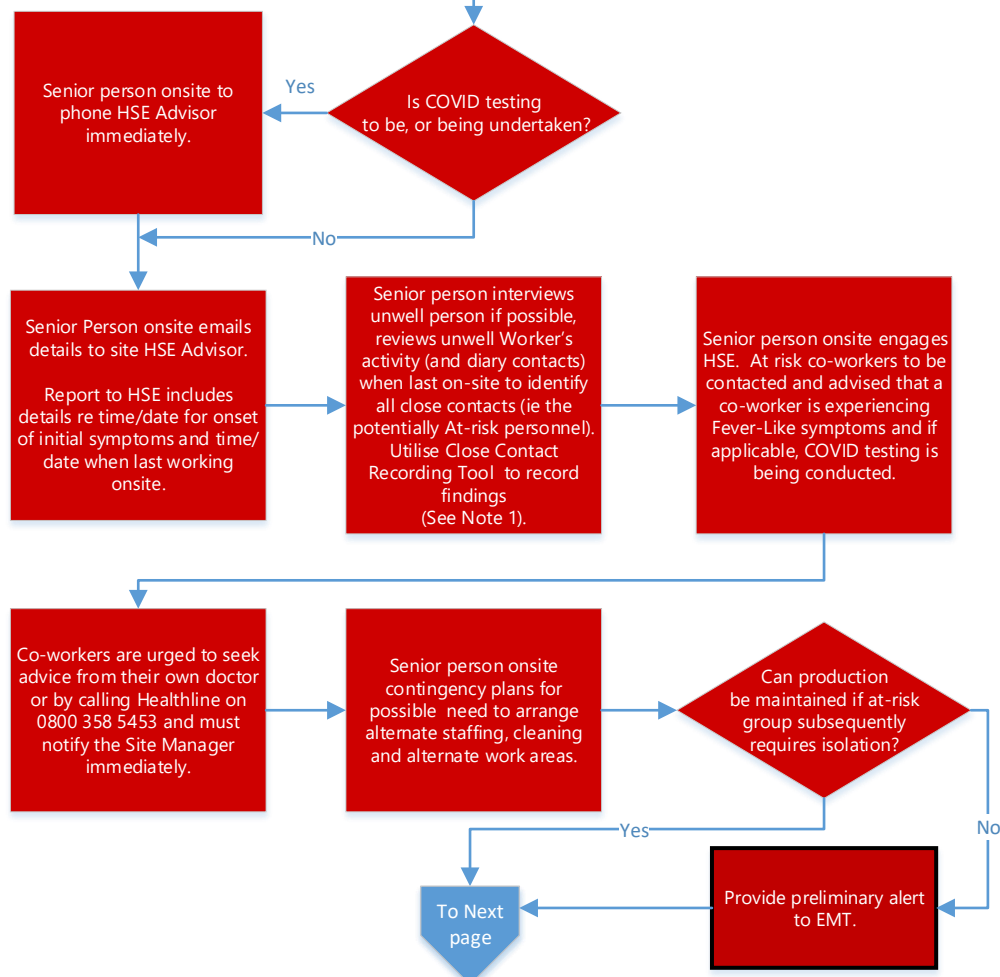
Hence risk exists that a worker falling ill within the first 48 hours of their rest break could potentially have been contagious and infect co-workers at the back end of their prior shift.



- Support is available at:
Healthline team on 0800 358 5453
-<https://www.health.govt.nz/our-work/diseases-and-conditions/covid-19-novel-coronavirus>

1. Issue Identification and Contact

2. Contingency Risk Management and Communication



Note 1: Close Contact Recording Tool includes applicable Close Contact definition.

- When communicating with at-risk co-workers, **do not identify the name of the unwell co-worker at any time** as this may create possible privacy issues (i.e. sharing of personal medical information).

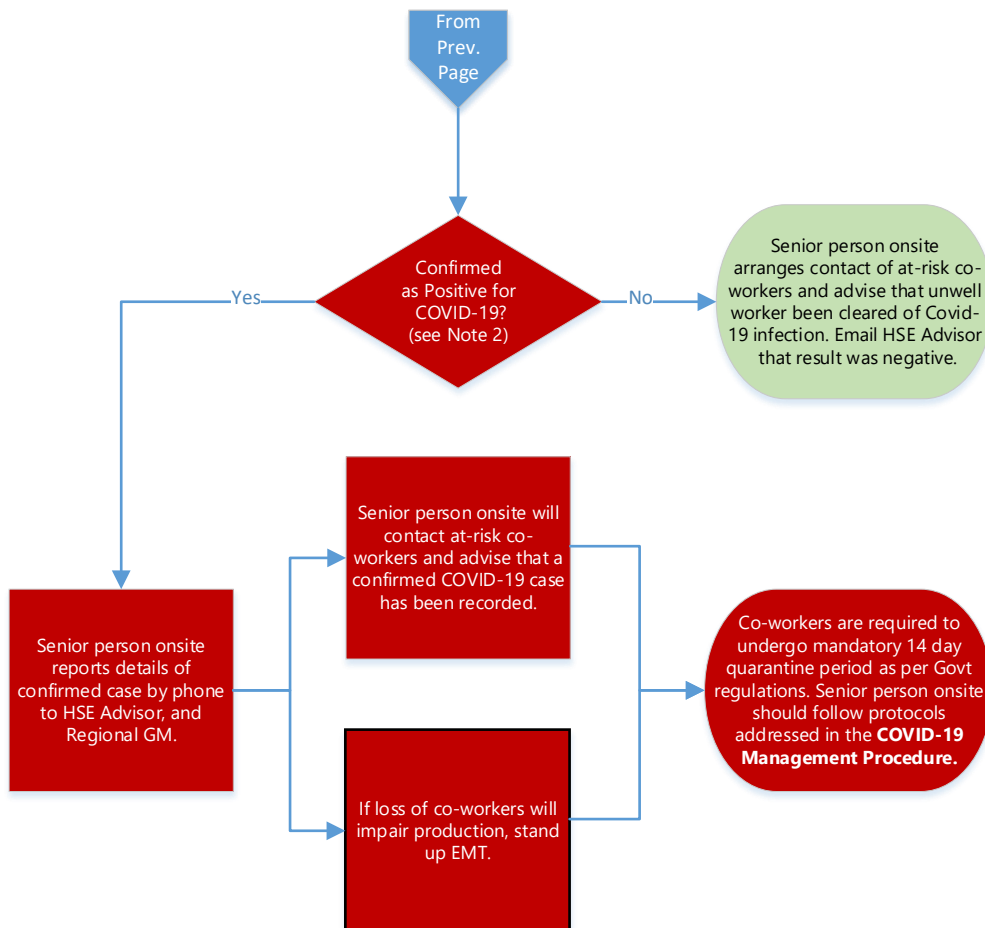
Worker Unwell Post Shift

Scenario Action Flowsheet - Worker Develops Possible COVID-19 Symptoms Post Completion of Shift Swing

3. Post COVID-19 Test Result Actions

Workflow

Notes



Note 2: The worker's Doctor will inform the patient of the result. The Ministry of Health will also contact the unwell worker for contact tracing purposes (provision of the Close Contact Recording Tool will assist the Government officers).

- When communicating with at-risk co-workers, **do not identify the name of the un-well co-worker at any time** as this may create possible privacy issues (i.e. sharing of personal medical information).